



NEWSLETTER

Pi Gamma Mu

International Honor Society in Social Sciences

The mission of Pi Gamma Mu® is to encourage and promote excellence in the social sciences and to uphold the ideals of scholarship and service.

Number 205

November 2015

In This Issue:

2015 SCHOLARSHIP WINNERS ANNOUNCED

MEMBERSHIP DRIVE

2014-15 STAR CHAPTERS

2015 CHAPTER HONOR ROLLS ANNOUNCED

PGM LAUNCHES NEW SOCIAL MEDIA CAMPAIGN

SOUTHEAST REGION CONFERENCE CALL SCHEDULED

SAVE THE DATE

2015-16 NATIONAL SERVICE PROJECT

HABIB BAIG, WV IOTA, VOLUNTEERS TO FEED THE HOMELESS

SHOW YOUR PI GAMMA MU PRIDE

CONNECT WITH IITM ON FACEBOOK, TWITTER, AND LINKEDIN

ACHS MEMBERSHIP PROTECTS THE LEGITIMACY OF HONOR SOCIETIES

MISSION, IDEALS, and SYMBOLS OF PI GAMMA MU

NEWSLETTER EMAIL LISTSERV SUBSCRIPTIONS

Members who receive the *Pi Gamma Mu Newsletter* by email are subscribed to the Pi Gamma Mu Mailing List.

[Click here to subscribe or unsubscribe to the Pi Gamma Mu listserv](#), and follow the instructions to leave or join the list.

CHANGE OF ADDRESS

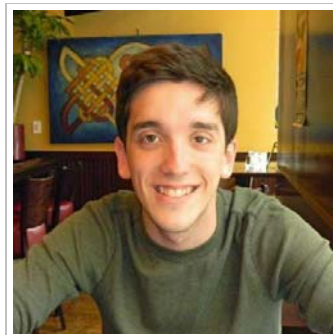
Anytime you move, such as after graduation, please notify the Pi Gamma Mu office immediately. This will prevent your mailings from being interrupted or discontinued. The *International Social Science Review* is returned to us by the post office, which is an additional expense for the international office to absorb. Just mail a change-of-address card, post card, or letter to Pi Gamma Mu, 1001 Millington St., Suite B, Winfield, KS 67156. If you prefer, you can send an E-mail message (executivedirector@pigammamu.org), or go to our Web site (www.pigammamu.org) to change your address information. We need your name, as well as your old and new address. Thank you very much for taking a few minutes to keep your information current.

When you graduate, please give us a new E-mail address if you have been using your college address to receive your *Pi Gamma Mu Newsletter*. At some point (each college is different), your college E-mail address will be eliminated and you will no longer receive the newsletter or other information from Pi Gamma Mu.

2015 SCHOLARSHIP WINNERS ANNOUNCED

After much deliberation on the part of the Pi Gamma Mu Awards Committee, the committee's chairperson, Dr. Clara Small, recommended 11 scholarship winners to the Board of Trustees. The board awarded scholarships to the following lifetime members of Pi Gamma Mu:

The **Carroll Parish Scholarship** of \$2000 was awarded to **Tyler Plogher**. Plogher earned a B.S. degree double majoring in psychology and sociology from the University of Evansville where he joined the Indiana Alpha chapter. He is enrolled in graduate school at Florida International University in Miami and is seeking a Ph.D. degree in legal psychology. At the University of Evansville, Plogher served as an assistant in two research labs, co-authored three academic publications, won a grant from the American Psychology-Law Society and presented research at three conventions. His long-term goal is to become a college professor spending time on research, teaching, and mentoring students. Dr. Mari Plikuhn is the faculty sponsor of the Indiana Alpha chapter.



Tyler Plogher

Duncan Knox is the recipient of the \$2000 **Marvel Stockwell Scholarship**. He is a member of the Texas Sigma chapter at Angelo State University. Dr. Shirley Eoff is the chapter sponsor. At Angelo State Knox majored in history with a minor in English. Experiences working with immigrants at Ellis Island and at the Fulbright Institute at the University of Bristol spurred Knox's passion for studying the human experience from a historical and international perspective. Knox has presented papers and posters at several history and honors conferences. He plans to earn an M.A. and Ph.D. in history and work as a professor and researcher at the university level.



Duncan Knox

The \$2000 **Effie B. Urquhart Scholarship** was awarded to **Kailey McDonald**. McDonald joined Pi Gamma Mu through the New York Sigma chapter at Le Moyne College where she was a double major in peace and global studies and political science. She also participated

in the honors program and minored in communications, creative writing, and gender and women's studies. She participated in multiple conferences and student organizations and completed a six-week internship in El Salvador where she worked at the Foundation Cristosal's Global School. McDonald is seeking a master's degree in gender and women's studies. Dr. Jeffrey Chin is the New York Sigma chapter sponsor.



Kailey McDonald

The **Daniel E. Quigley Scholarship** of \$1000 was awarded to **Jon Abrahamsen**. Abrahamsen is a member of the Kansas Lambda chapter at Wichita State University. Prof. Sheryl Chapman is the chapter sponsor. After dropping out of high school, Abrahamsen decided to turn his life around and obtained his GED, an associate's degree, then a bachelor's degree in political science. While at Wichita State, Abrahamsen became involved with the Student Government Association and became the Student Body Vice-President. In 2012, he completed an internship in the office of U.S. Senate Majority Leader Harry Reid and later became the Executive Director of the Sedgwick County Democratic Party. Abrahamsen plans to continue to make positive contributions by obtaining a J.D. degree and working as an attorney in a District Attorney's office.



Jon Abrahamsen

Brandon Love was the recipient of the **Gordon E. Mercer Scholarship** of \$1000. Love joined Pi Gamma Mu through the Louisiana Iota chapter at Dillard University where he earned a B.A. degree in political science. He is seeking a master's degree in

executive public administration and plans to work in the field of law enforcement. Raised by his grandmother, Love had to take on the duties of managing the household and caring for his younger sister at the age of 15 when his grandmother became ill teaching him the value of perseverance. While at Dillard, Love was awarded the Institute for Public Policy fellowship which includes summer policy institutes, language training, study abroad, an internship, and a leadership development program. In the field of law enforcement, Love plans to serve as a social agent to help provide oversight, guidance, and support for a high quality of human life. The sponsor of the Louisiana Iota chapter is Dr. Robert Collins.



Brandon Love

The following, in alphabetical order, were awarded \$1000 Pi Gamma Mu scholarships:



Susan Bearns

Susan Bearns joined Pi Gamma Mu through the Maryland Theta chapter at the University of Maryland University College where she earned a B.S. in psychology with academic honors. She is currently attending the University of Maryland at Baltimore where she is working on a master of social work degree. Bearns earned her bachelor's degree after being out of school for almost 30 years. In overcoming her own set of hurdles, Bearns developed a passion for helping others struggling with life's challenges. She has fulfilled this personal mission by volunteering with college students, as a hospice worker, and as a victim's advocate. She has also worked as a crisis counselor expanding her experience to include victims of domestic violence and those at risk for suicide. As part of her graduate program, Bearns is an intern with the Maryland Crime Victim's Resource Center which she finds to be rewarding. She looks forward to a career in clinical social work. Dr. Katherine Im is the Maryland Theta chapter sponsor.

Katherine Dubowsky was initiated into Pi Gamma Mu at the Massachusetts Delta chapter at Wheelock College. Dr. Marcia Folsom is the chapter sponsor. Dubowsky earned a B.S. in human development with a focus on the study and treatment of autism. She is seeking a master's degree in applied behavior analysis and autism. During her

senior year at Wheelock, Dubowsky interned at the Barry Price Center in Newton, MA where she worked with individuals with intellectual disabilities. She is currently employed at the FOCUS Center for Autism in Canton, CT and plans to dedicate her career to working with autistic children.



Katherine Dubowsky



Michelle Mazurek

Michelle Mazurek joined the society through the Illinois Xi chapter at Elmhurst College. She earned a B.S. in psychology with a minor in social work. She has worked and volunteered in a variety of settings serving others including those affected by domestic violence. Mazurek is currently working on a master's degree in social work at Aurora University in Illinois which will allow her to follow her passion of helping individuals regain stability and independence in their lives.

Anthony Redman was initiated into the society through the South Dakota Zeta chapter at Presentation College. The chapter is sponsored by Dr. Brad Tennant. Anthony earned an A.S. degree in Native American Studies from Little Bighorn College in 2011 and a B.S. in American Studies from Presentation College in 2014. Anthony is a member of the Northern Arapaho Tribe having grown up on the Wind River Reservation in Wyoming. He is currently attending Northern State University in South Dakota where he is studying Counseling. His long-term goal is to attain a job as a licensed school

counselor. He plans to take his talents back to the reservation to give back to his tribe. He hopes to serve as a role model for children on the reservation and to inspire them to pursue higher education.



Anthony Redman

Khailiah Robinson joined Pi Gamma Mu through the Florida Lambda Chapter at Saint Leo University. Dr. Susan Kinsella is the chapter sponsor of the Florida Lambda Chapter. Khailiah earned an A.A. degree from Savannah Technical College in 2011 and a B.A. from Saint Leo in 2015. She is seeking an M.A. degree from St. Leo University in the field of Human Services. In the long-term, Khailiah plans to work as an executive director in the field. Her experiences working with the homeless, substance abusers, victims of domestic violence, and other endangered populations taught Khailiah that all people need somebody to care and show compassion for them. She hopes to help fill the gaps in services for such populations.



Ashley Smith

Ashley Smith joined Pi Gamma Mu through the Ohio Epsilon chapter at Baldwin Wallace University. The chapter sponsor is Dr. Liya Wang. Smith obtained a B.S. in psychology and developed her own minor in societal health perspectives encompassing the fields of sociology, communication, and health education. Currently, she is working on a master's degree in public health with a concentration in social and behavioral sciences at Kent State University. Her long term goal is to obtain a Ph.D. in order to continue in research and program development at the Cleveland Clinic and to serve as a professor at a local college or university. She also aspires to conduct research, educate local communities, write, and serve as a board member for an organization that assists those in need.

MEMBERSHIP DRIVE



2015-2016 is an important year for Pi Gamma Mu and this year we are continuing to focus on growth. In order to maintain fiscal stability and prepare for a strong future we must continue to grow by inviting more outstanding students who deserve to be honored to become lifetime members. Receiving an invitation to join Pi Gamma Mu is an honor both students and parents value a great deal. We want more top students to have this opportunity and we are asking chapter sponsors to help us achieve this mission.

Last year we expanded our Pi Gamma Mu Star program. Chapters who increased their membership by 20% or more over the previous fiscal year became "Star" Chapters. These chapters are recognized on our website and received a wall plaque. In 2014-15, 29 chapters achieved this status! Why not join the ranks of these successful chapters in 2015-16? We ask you to help Pi Gamma Mu grow by offering the benefits of membership to more qualified students this year.

Another avenue for growth is the chartering of new chapters and the reactivation of chapters that have become inactive. If you know a faculty member at a college or university without a chapter who might be interested in getting a chapter started, please provide us with their contact information and we will assist them with chartering a new chapter at their school.

APPLICATIONS FOR 2016 GRADUATE SCHOLARSHIPS DUE ON FEBRUARY 15

Each year, Pi Gamma Mu awards up to 11 scholarships to outstanding members. Three scholarships are worth \$2000 each, and the other eight are worth \$1000 each. These scholarships are intended for the first or second year of graduate work in the social sciences. If you are interested in applying, you should start putting your information together right away. Applications must be fully completed and received at the Pi Gamma Mu office in Winfield, Kans., with a postmark on or before February 15. Winners will be notified in April, with the grants awarded in October. Please check the Pi Gamma Mu website for information and the application form.



STAR CHAPTERS

The following chapters increased their number of new initiates by 20% or more in 2014-15 as compared to the previous academic year:

Arkansas Delta, Southern Arkansas University, Paul Babbitt
Arkansas Eta, University of Arkansas – Fayetteville, Laurence Hare
California Pi, University of California – Irvine, Gitty Amini
Delaware Alpha, Delaware State University, Sam Hoff
Delaware Beta, Wilmington University, Johanna Bishop
Florida Lambda, Saint Leo University, Susan Kinsella
Florida Theta, Barry University, Lisa Konczal
Illinois Rho, Eureka College, Junius Rodriguez
Indiana Alpha, University of Evansville, Mari Plikuhn
Kansas Alpha, Southwestern College, Carrie Lane
Kansas Kappa, Central Christian College, Jamie Sparks
Maryland Epsilon, Coppin State University, Elias Taylor
Massachusetts Delta, Wheelock College, Marcia Folsom
Mississippi Eta, Alcorn State University, Antrina Bell
Missouri Theta, Maryville University, Kent Bausman
New Hampshire Beta, Saint Anselm College, Tauna Sisco
New Hampshire Gamma, Plymouth State University, David Starbuck
New York Alpha Delta, Cazenovia College, John Greene
New York Beta, Elmira College, Jim Twombly
North Carolina Nu, Saint Andrews University, David Herr
North Carolina Upsilon, Fayetteville State University, Kofi Johnson
Oklahoma Epsilon, University of Science & Arts of Oklahoma, Christopher Garneau
Texas Psi, Huston Tillotson University, Michael Hirsch
Texas Upsilon, University of Houston – Downtown, Joanna Kaftan
Texas Zeta, University of Mary Hardin-Baylor, Janet Adamski
Vermont Beta, Norwich University, Emily Meyer
Virginia Delta, Emory & Henry College, John Morgan
Virginia Epsilon, Radford University, Sharon Roger Hepburn
West Virginia Beta, Fairmont State University, Charles Shields



Increasing your chapter's membership helps Pi Gamma Mu accomplish its mission to encourage and recognize superior scholarship by extending the benefits of membership to more students. It is the collection of the lifetime membership fees from new members that sustains Pi Gamma Mu and we ask for your continued support in this area. Increasing membership will also benefit more of the high performing students at your school with opportunities for scholarships, publications, networking, and more. Increase your chapter's number of new initiates by 20% or more in 2015-16 as compared to the previous academic year and we will send you a Pi Gamma Mu Star plaque and will recognize your chapter in a future issue of the Pi Gamma Mu newsletter.

2015 CHAPTER HONOR ROLLS ANNOUNCED

During the annual meeting of the International Board of Trustees in September 2015, the board approved the recommendation of the Awards Committee concerning which chapters are recognized on this year's Roll of Distinction and Roll of Merit.

The Rolls are the result the Awards Committee's evaluation of the annual reports filed by responsible chapter officers. Among the criteria reported are facts indicative of the activity and effectiveness of the chapter on its campus, as well as its efficiency of operation according to procedures suggested or required by the international board. This includes chapter organization and participation by faculty members and students, election and initiation of members, and financial responsibility. Local initiatives in developing new activities or methods of operation are considered.

ROLL OF MERIT

Georgia Rho, Reinhardt University, M. Katrina Smith

Indiana Alpha, University of Evansville, Mari Plikuhn

New York Tau, Pace University, Linda Quest

Pennsylvania Alpha Omicron, Washington and Jefferson University, Yongsheng Wang

Texas Psi, Huston Tillotson University, Michael Hirsch

Texas Zeta, University of Mary Hardin Baylor, Janet Adamski

ROLL OF DISTINCTION

Maryland Theta, University of Maryland University College, Katherine Im

North Carolina Alpha Beta, Chowan University, Danny Moore

Nebraska Delta, Wayne State College, Randy Bertolas

Pennsylvania Kappa, Mansfield University, Janice Purk

Philippines Alpha, University of Philippines, Luisa Camagay

Virginia Delta, Emory and Henry College, John Morgan

West Virginia Iota, American Military University/American Public University, Allison G.S. Knox

PGM LAUNCHES NEW SOCIAL MEDIA CAMPAIGN AIMED AT GROWTH AND REQUESTS YOUR SUPPORT

A significant goal of Pi Gamma Mu is to bring the ideals of scholarship, collaboration, and service to colleges and universities around the world through reactivating and establishing new chapters of Pi Gamma Mu at these institutions. In addition, growth through the development of new chapters is essential to the future sustainability of Pi Gamma Mu. In order to grow and to achieve our mission Pi Gamma Mu staff continually reaches out to college faculty to solicit interest in providing recognition to top social science students through establishing a chapter of Pi Gamma Mu. In a recent expansion of this growth initiative a new Facebook advertising campaign was launched to help increase awareness of the benefits of hosting a chapter. The campaign was made possible by donations from several of the society's top chapters and private supporters. To date, a total of \$1,250 in donations has been received. Since launching the ads just a few weeks ago, the Pi Gamma Mu website has received hundreds of new visitors, tens of thousands of Facebook users have been reached, and the international office has received multiple inquiries about starting new chapters! **The society plans to continue this effective social media advertising program and asks for your financial support.** Pi Gamma Mu Chapters, chapter sponsors, new members, and alumni are asked to send in donations of any size to help support the society's efforts to continue to grow through this new promotion. A donation of \$50 is suggested but we will happily accept donations of any size. Upon request we will send you an invoice for the amount you wish to donate to provide documentation you might need to release chapter or university funds. In recognition of your support of this new promotional program we will include your school's logo or a photo of your chapter along with recognition of your sponsorship of the ad.



Donations can be mailed to Pi Gamma Mu, 1001 Millington St., Ste. B, Winfield, KS 67156. Thank you for your support!

Below is an example of a Facebook ad that your donation will help fund:

SEEKING NEW CHAPTERS

www.PiGammaMu.org

Pi Gamma Mu International Honor Society is seeking to charter new chapters at colleges and universities around the globe. Visit www.PiGammaMu.org or call 620-221-3128 to learn more. Founded in 1924, Pi Gamma Mu is the leading honor society in the social sciences. There is no cost to the university to host a chapter of the society and there are many benefits of membership. Members are eligible to apply for one of eleven annual scholarships, present research papers at international and regional conventions, submit articles for publication in our peer-reviewed professional journal, and those interested in federal jobs have the possibility for advancement in government service rating. Pi Gamma Mu is interdisciplinary in nature, allowing chapter sponsors and members to expand their professional networks by working collaboratively with society members from various fields of study. Each chapter is eligible to apply for up to \$300 in lectureship grants annually. Each chapter must have one or more faculty sponsors. Contact us to learn more today!

This promotion was supported by a generous donation from the Florida Lambda Chapter at Saint Leo University.



To make a donation simply go to our website and click on the [Donate Now!](#) button from any page. This will take you to the Online Donation Form. Online payment is by major credit card or PayPal account. Transactions are handled securely at the payment processor site. Pi Gamma Mu does not receive your sensitive financial data.

If you prefer to mail your donation, please complete the donation coupon below and mail it with a check payable to Pi Gamma Mu, at the following address: Pi Gamma Mu, 1001 Millington St., Suite B, Winfield, KS 67156.

 [Print donation coupon](#)

Thank you for your generosity and support of Pi Gamma Mu.

SOUTHEAST REGION CONFERENCE CALL SCHEDULED FOR FRIDAY, NOVEMBER 13, 2015 10:00 AM (EST)

Allison G. S. Knox, Board of Trustees Chancellor for the Southeast Region and faculty member and Pi Gamma Mu chapter sponsor at American Military University/American Public University, will host a conference call for chapter sponsors in the southeast region later this month. The call will be held on Friday, November 13, 2015 at 10:00 a.m. eastern standard time. The call will include a discussion about student officer positions and the roles students may take at various chapters throughout Pi Gamma Mu. Knox and Pi Gamma Mu executive director, Suzanne Rupp, will also provide updates on conferences, scholarships, chapter service projects, and more.



All chapter sponsors from the southeast region are invited to participate. Check your email for an invitation and dial-in instructions from Allison G. S. Knox or call the international office at 620-221-3128 for details. The southeast region includes the following: Alabama, Florida, Georgia, Kentucky, Louisiana, Mississippi, North Carolina, South Carolina, Tennessee, Virginia, West Virginia and Puerto Rico. We look forward to speaking with you!

SAVE THE DATE! November 2-4, 2017

Attend the 2017 Triennial International Convention in Kansas City, MO

Mark your calendars! Plans are coming together for our next Triennial International Convention. Join us in Kansas City on November 2-4, 2017! Our hotel, the Marriott Kansas City – Country Club Plaza puts you in the heart of Kansas City's world famous Country Club Plaza, the Midwest's premier shopping, dining, and entertainment district. Situated between two distinguished art museums, The Nelson Art Gallery and the Kemper Museum of Contemporary Art, the Marriott is an ideal location to get together to celebrate Pi Gamma Mu's rich history. Let the hotel's complimentary shuttle pick you up after a great meal or a shopping trip at the Plaza or travel just a little further to visit Kansas City's Crown Center entertainment district, Union Station and Science City, the historic City Market, the National World War I Museum and Memorial, Westport, the Power and Light district, and much more.



Up to 32 students will receive funding from Pi Gamma Mu to help cover the costs of attending the convention. This represents an approximate \$4,000 commitment to support students' travel to the convention. Many colleges and universities provide additional funding for students and faculty members to attend professional conferences. Why not take advantage of this great opportunity to participate in the 2017 Triennial Convention? Now is the time to start planning your trip to Kansas City!

Student Paper Presentations - Pi Gamma Mu student members may propose to present their research papers at the convention. Pi Gamma Mu will pay for one night's lodging at the convention hotel for up to 12 students selected to present their papers orally. Up to 8 additional students will be selected to present their research in a poster format and will receive free convention registration (a \$100 value). Proposals must be submitted in the form of a completed research paper. Complete instructions for paper proposals will be available on the website soon. Think about it... presenting at an international convention looks great on a resume and can provide a boost to your career!

Leadership Program – We will be launching the new Pi Gamma Mu Student Leadership Program at the 2017 convention. If you are interested in learning more about Pi Gamma Mu student leadership roles or leadership in general this program is for you! Pi Gamma Mu leadership positions include two student representatives on the International Board of Trustees (a three year term on the board) and a variety of student officer positions at the chapter level. Several students who write winning entry essays will receive financial support to attend the convention. Complete instructions to apply for this program will be available soon.

Chapter Development Showcase – Share your chapter's story at this unique event. Chapters can display their histories, service projects, and other accomplishments in this poster session. Help other Pi Gamma Mu chapters learn from you by submitting a poster for presentation at the convention!

Convention Launch Party/Convention Opening – This Thursday evening event will kick off the convention and will feature a Pi Gamma Mu trivia competition, door prizes, and the opportunity to meet and greet Pi Gamma Mu board members, chapter sponsors, and members from around the globe. The event will be immediately followed by the Plenary Session including the Roll Call of Chapters, the President's Triennial Report, and the Service Project Presentation.

Awards Banquet Gala – On Friday evening join us for the 2017 Awards Banquet Gala. The event will include dinner; recognition of top chapters, alumni, sponsors, and other contributors; recognition of chapter milestones; and a keynote address. There is no additional cost to attend the Gala. Please join us!

Service Project – We will be continuing the Pi Gamma Mu tradition of engaging in an international service project at the convention. In recent year, delegates brought stuffed animals to the convention. The toys were donated to a local organization helping families and children in need. This program is a well-regarded Pi Gamma Mu tradition and we hope you will help us achieve this service goal. Previous recipients include the Partnership Against Domestic Violence in Atlanta, GA, the Artemis House in Fairfax County, VA, and My Sister's House, Inc. in N. Charleston, SC.

Invitation to Alumni – Pi Gamma Mu continues to encourage alumni to attend and participate in the triennial international convention. If you are able to attend, we would love to see you at the convention!

Registration – The convention registration fee is \$100. This includes continental breakfasts on Friday and Saturday and a dinner banquet on Friday evening. There will be an additional fee for an optional tour of the city (details to be determined). Convention registration will open at a later date. The advanced registration deadline is October 12, 2017. Registrations received after that date including on-site registrations will be \$125.

Hotel – We will be staying at the Marriott Kansas City – Country Club Plaza in Kansas City, MO. The room rate is \$139 per night (plus applicable taxes) for up to four people per room. The hotel is located at 4445 Main Street; phone 816-531-3000; [link to hotel website](#). Attendees can fly into Kansas City International Airport and take the SuperShuttle for \$19 one-way or \$33 round trip. Reservations are required – call SuperShuttle at 800-258-3826.

NATIONAL SERVICE PROJECT

This fall and winter, we are putting together donation boxes for the homeless in our own respective areas. If every chapter put together one box for an organization in their own community, Pi Gamma Mu could collectively help thousands of people. Together, we can work to make a difference across the country!

To get involved, please find a homeless shelter in your own town or city. Call them and ask them what they need to help others in terms of donations. Put together a box, (perhaps including canned goods, blankets, coats, etc.), and take it over to them during the fall or winter seasons. Please be sure to let the international office know that your chapter has contributed to this service project.

Most importantly, thank you for taking the time to contribute to this project. Thank you for helping to make this project a success!



HABIB BAIG, WV IOTA, VOLUNTEERS TO FEED THE HOMELESS



Habib Baig, lifetime member of the West Virginia Iota Chapter, volunteered at a Feed the Homeless program in Rockville, MD last month. The program was held at an emergency shelter and was sponsored by the Islamic Center of Maryland Social Services Committee (www.icomd.org) and Montgomery County Coalition for the Homeless (www.mcch.net). The organizations take part in the event every month. Menu items served included rice, baked chicken, dinner rolls, salad, pasta/sauce, non-carbonated drinks, and dessert. The volunteers were tasked with preparing tables with the various items and then serving hot cooked meals, drinks, and dessert. Habib and his wife served drinks and desserts. Habib said, "The event was an exceptional experience as we were able to be appreciative for everything that we have, enabling us to better understand our responsibility."

The West Virginia Iota Chapter at American Military University/American Public University is sponsored by Professor Allison G. S. Knox. Knox also serves on the Pi Gamma Mu International Board of Trustees as the Chancellor for the southeast region. Under Knox's guidance, the chapter started a service project last June in which donations were collected for distribution to a homeless shelter in the Washington D.C. area. The project served as the inspiration for Pi Gamma Mu's current National Service Project in which chapters are asked to start a donation box for a shelter in their area.

SHOW YOUR PI GAMMA MU PRIDE

Visit our [merchandise webpage](#) to show your Pi Gamma Mu pride. Our exclusive merchandise not only gives you the opportunity to proudly display your achievement and affiliation with the society, but merchandise purchases also support the activities of Pi Gamma Mu and help us finance our programs and awards.

Display your accomplishments by wearing Pi Gamma Mu **honor cords** at commencement ceremonies. Honor cords are \$17 each (or \$15 each for orders of 10 or more). Other items include gray men's t-shirts and pink women's t-shirts proudly displaying the Pi Gamma Mu logo and name on the front and the mission statement on the back for \$20 and navy and white polo shirts embroidered with the Pi Gamma Mu seal for \$25. Coffee mugs, lanyards, and keypins are also available to members for purchase.



Thank you for your continued support of Pi Gamma Mu!

LIVE. LEARN. INTERN. PROGRAMS IN WASHINGTON DC

Now Accepting Applications for Summer 2016

www.DCinternships.com

The Washington D.C. based internship program is excited to announce a new program for this summer - **Leadership and the American Presidency**. This program will further develop students' leadership skills by focusing on lessons and interactive simulations from the American Presidency. More information may be found at www.DCinternships.org/LTAP.

Gain that competitive edge in the fields of public policy, journalism, international affairs, business or the nonprofit sector by interning in the city where history is made. Taking advantage of a Washington, DC internship is a valuable investment in your future that will set you apart after college. The comprehensive programs sponsored by The Fund for American Studies include:

- A guaranteed internship placement
- Courses for transferable credit from George Mason University
- Furnished housing conveniently located close to Metro rail stations and key attractions in Washington
- Networking events, exclusive briefings, guest speakers and a mentor program

THE INTERNSHIP EXPERIENCE

DC Internships has been creating academic internship experiences for over 40 years and guarantee all participants an internship placement. Your options are endless – we work with over 300 different federal agencies, policy groups, international affairs organizations, media outlets, public affairs firms, government relations offices, and nonprofit organizations.

Working in this powerful city will allow you to make professional connections and practice networking skills in a real-world setting. Washington, DC is the perfect place to explore a variety of career paths, and we work with each student's unique goals and aspirations to match them with the most fitting internship site.

Nominate a Top Student Today

Please also consider nominating top students for special scholarship consideration. We award close to a million dollars annually and preference is given to nominated students. You may nominate by visiting www.DCinternships.org/Nominate.

ACHS MEMBERSHIP PROTECTS THE LEGITIMACY OF HONOR SOCIETIES

Pi Gamma Mu is one of 66 members of the **Association of College Honor Societies (ACHS)**, which is the authority on standards and definitions for the honor society movement. ACHS has stepped up efforts to alert the higher education community to the standards of traditional honor societies. In contrast, some new so-called honor societies exist online and allow self-nomination, accepting fees with no questions asked. If in doubt about an organization, you can check out the ACHS website (www.achsnaatl.org) for the [list of honor societies](#) that are members.



CONNECT WITH IIGM ON FACEBOOK, TWITTER, AND LINKEDIN



Like us on Facebook



Follow us on Twitter



Connect with us on LinkedIn

Here at Pi Gamma Mu, we see social media as another way for us to carry out our mission to encourage scholarship and to foster cooperation and service among our members. Now you can connect with us and other members and supporters of Pi Gamma Mu on the social networking sites you like to use. We welcome your comments, posts, and photos of chapter activities. Be sure to *like* us on [Facebook](#), *follow* us on [Twitter](#), and *connect* with us on [LinkedIn](#) to see announcements, opportunities, and deadlines (such as the scholarship application deadline).

Please note that several Facebook, Twitter, and LinkedIn accounts will come up when you search for "Pi Gamma Mu" as we encourage our chapters to stay connected via social media. Use the links shown here to ensure that you have connected with the official pages managed by the Pi Gamma Mu international office.

MISSION OF PI GAMMA MU

The Mission of Pi Gamma Mu is to encourage and promote excellence in the social sciences and to uphold the ideals of scholarship and service.

IDEALS OF PI GAMMA MU

There are seven ideals of Pi Gamma Mu. Do you know them?

1. **Scholarship** – it is basic to all the rest. With knowledge, we can build society and better understand humanity and what has been thought and said and tried in all generations.
2. **Science** – we need and admire the spirit of science – the firm belief that the problems that confront humanity can be solved if we will search out the facts and think clearly on the basis of those facts.
3. **Social Science** – we shall never understand or solve the problems of human association until we examine the souls of people, the passions, prejudices, hopes and fears.
4. **Social Idealism** – we believe in a human society fit for human life that humans themselves can build. "Where there is no vision the people perish." We will not give up our vision.
5. **Sociability** – specialization makes us narrow. Our social problems are complex. They will never be solved without the cooperation of all the social sciences and of those who study them.
6. **Social Service** – the primary purpose of science is to know and to enable us to do. What we know we want to put to work for the benefit of humanity.
7. **Sacrifice** – we are engaged in the greatest and finest of all the arts, the building of human society. Without giving freely, fully, and sacrificially of means, time, talent, energy and passion, all our other ideals will fall short and the contributions we hope to bring will never come.

SYMBOLS OF PI GAMMA MU

The **motto** of the Society is the epigram of the Master Teacher, "Ye shall know the truth and the truth shall make you free."

The society's **key** has a wreath at the bottom to suggest that social science is the outgrowth and fulfillment of natural science. The running figure is reminiscent of the ancient Greek torch race and symbolizes humanity bringing knowledge to the solution of its own problems and passing on the light from generation to generation.

The **colors** are blue and white - for truth and light.

The official **flower** is the blue and white cineraria.